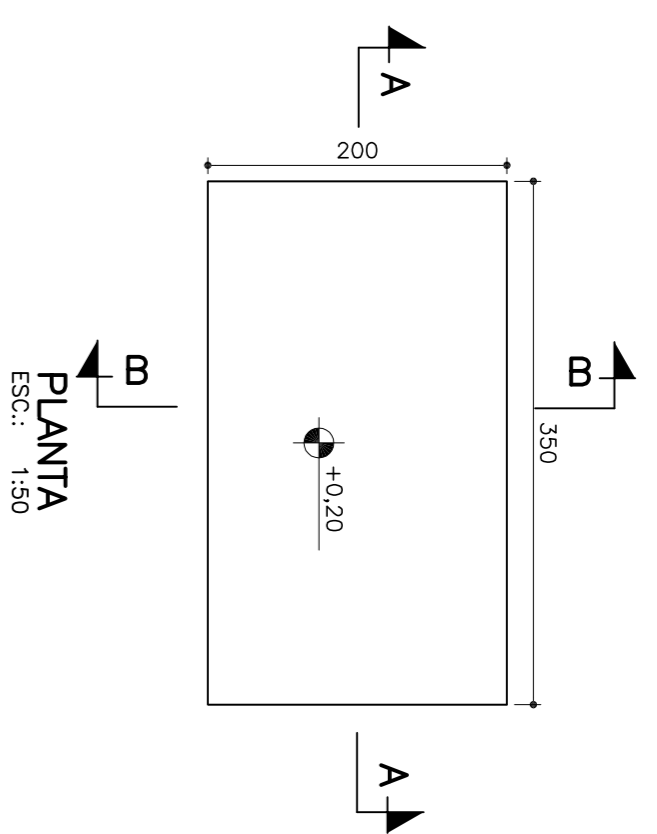


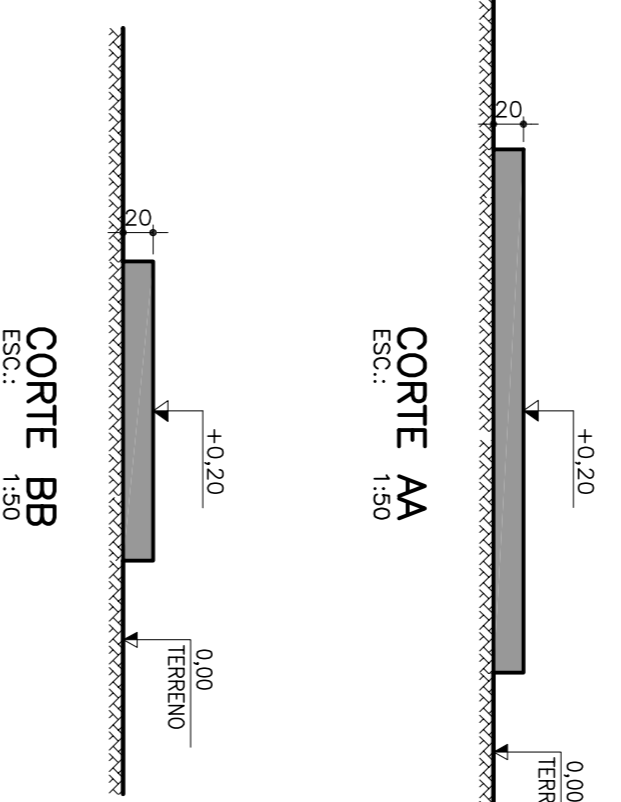
BASE DO ABRANDADOR

FORMA



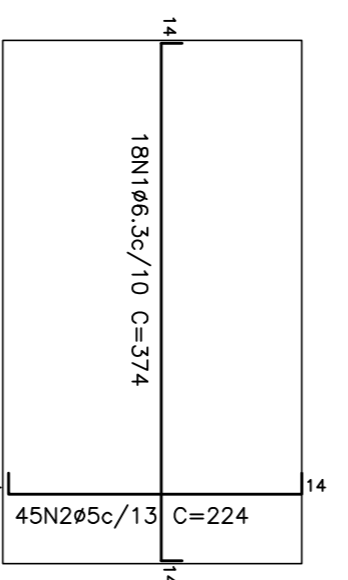
PLANTA
ESC.: 1:50

CORTE AA
ESC.: 1:50

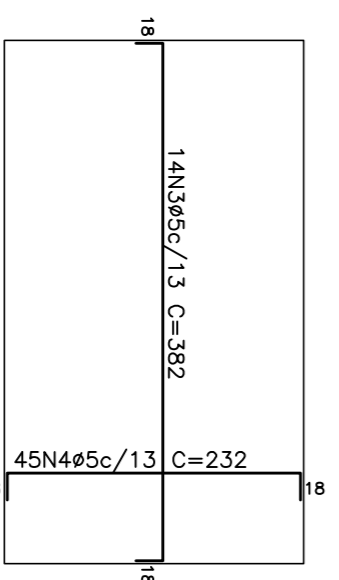


CORTE BB
ESC.: 1:50

ARMAÇÃO



ARMAÇURA POSITIVA
ESC.: 1:50

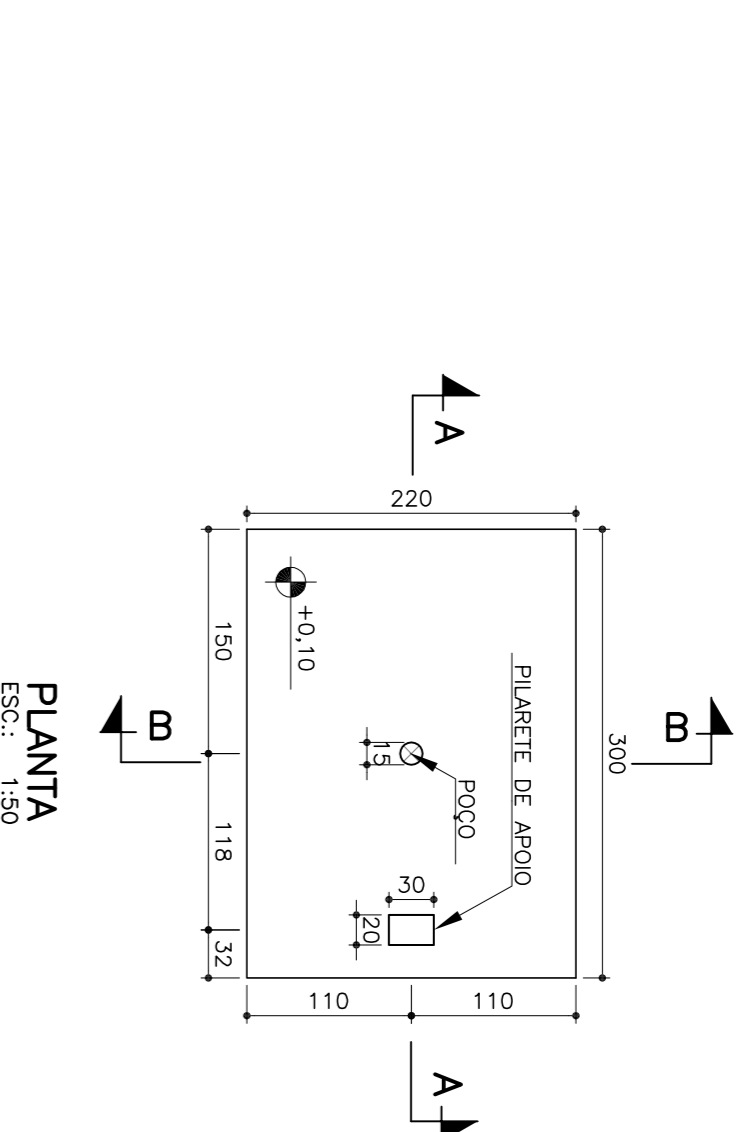


ARMAÇURA NEGATIVA
ESC.: 1:50

Elemento	Pos.	Diã.	Q.	Doç.	Retç.	Doç.	Comp.	Total	Ca-50	Ca-60
		(cm)	(cm)	(cm)	(cm)	(cm)	(kg)	(kg)	(kg)	(kg)
ARMAÇURA POSITIVA	1	#6.3	18	14	346	14	374	8732	16.5	15.8
	2	#5	45	14	196	14	224	10080	18.2	17.4
ARMAÇURA NEGATIVA	3	#5	14	18	346	18	382	6876	10.8	11.9
	4	#5	45	18	196	18	232	10440	16.4	18.0
Total+10%:								85.3	0.0	47.6
ES:								85.3	18.2	0.0
TSOL:								103.0	18.2	47.6

LAJE DO POÇO

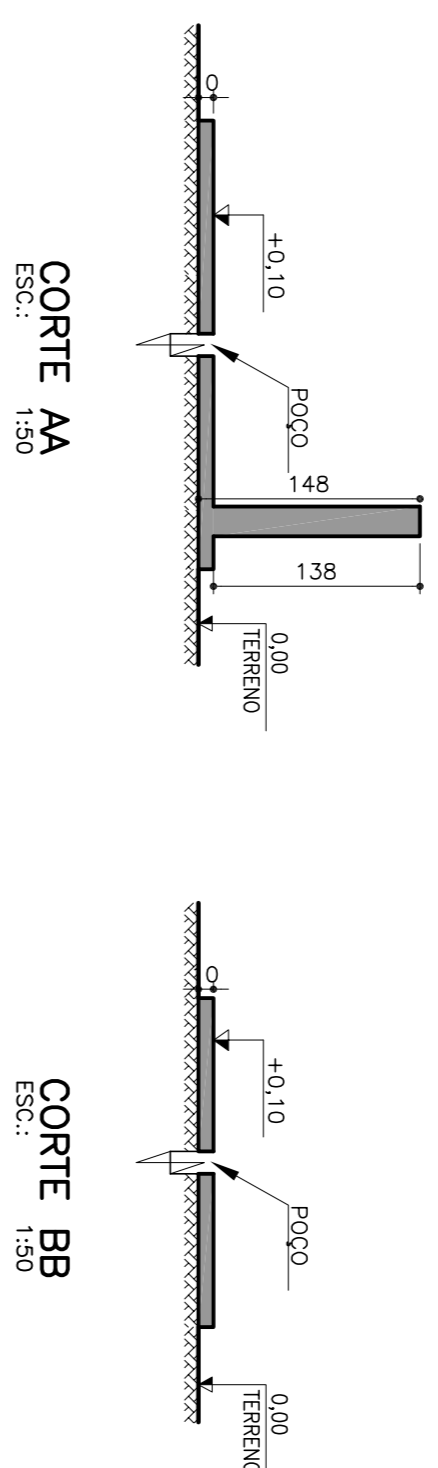
FORMA



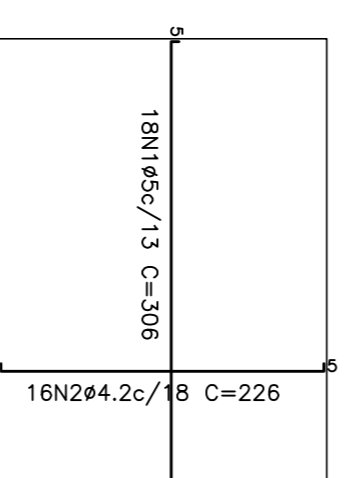
PLANTA
ESC.: 1:50

CORTE AA
ESC.: 1:50

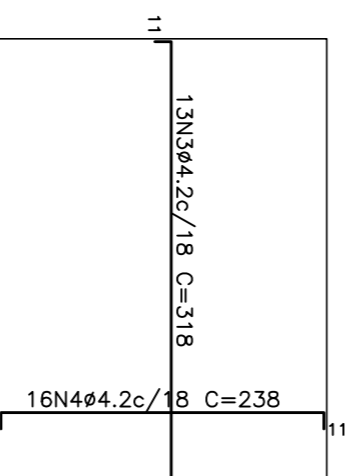
CORTE BB
ESC.: 1:50



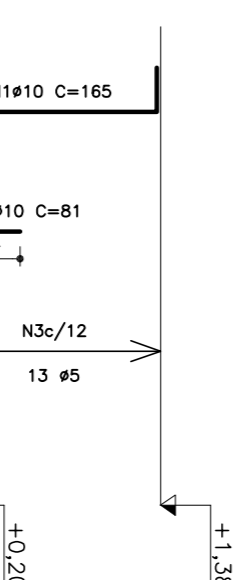
ARMAÇÃO



ARMAÇURA POSITIVA
ESC.: 1:50



ARMAÇURA NEGATIVA
ESC.: 1:50

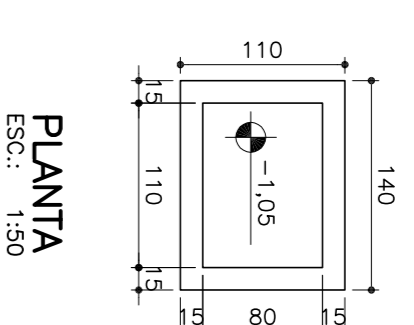


PILALETE DE APOIO
ESC.: 1:50

Elemento	Pos.	Diã.	Q.	Doç.	Retç.	Doç.	Comp.	Total	Ca-60	Aço
		(cm)	(cm)	(cm)	(cm)	(cm)	(kg)	(kg)	(kg)	
ARMAÇURA POSITIVA	1	#5	18	5	296	5	308	5508	8.6	Ca-50-A
	2	#4.2	16	5	216	5	228	3618	3.9	Ca-60-B
ARMAÇURA NEGATIVA	3	#4.2	13	11	296	11	318	4134	4.3	
	4	#4.2	16	11	216	11	238	3808	4.2	
Total+10%:								#4.2:	13.9	
ES:								#5:	18.2	
TSOL:								23.1		

CAIXA DE MANOBRA

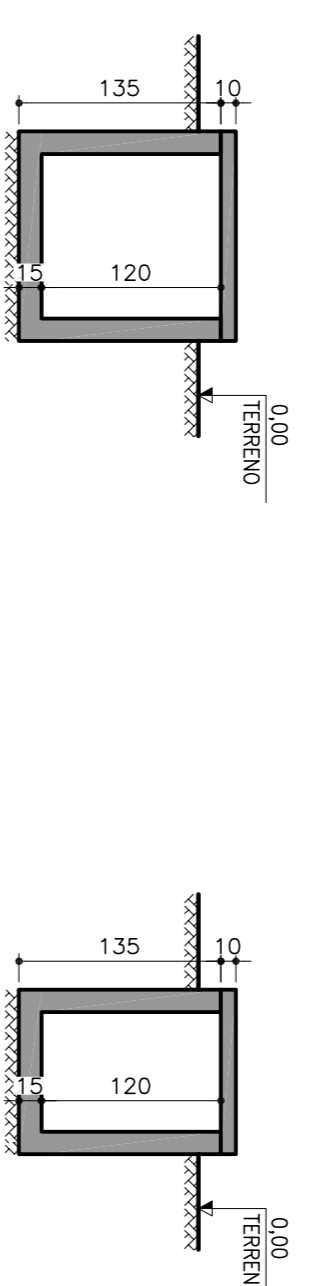
FORMA



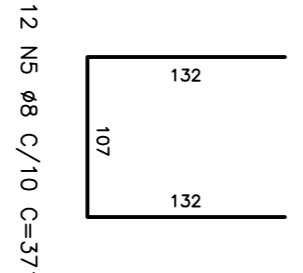
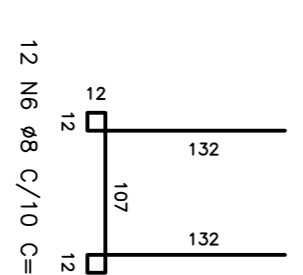
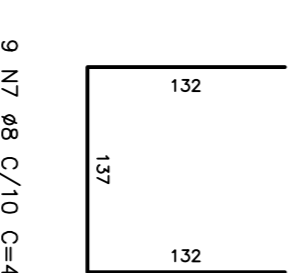
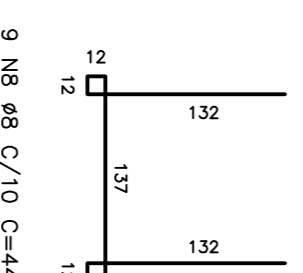
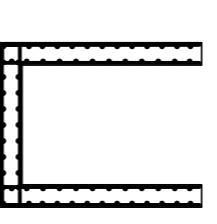
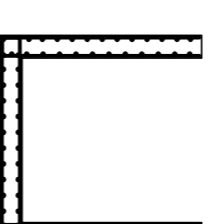
PLANTA
ESC.: 1:50

CORTE AA
ESC.: 1:50

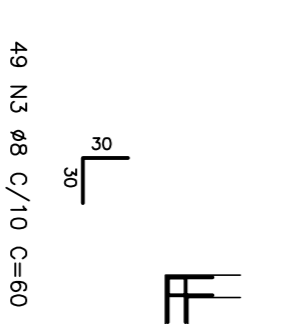
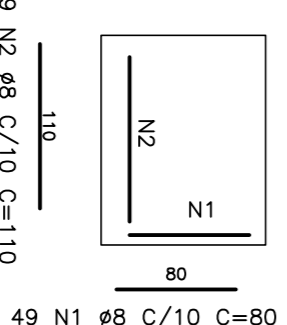
CORTE BB
ESC.: 1:50



ARMAÇÃO



PAREDES
ESC.: 1:50



LAJE DE FUNDO E TAMPA
ESC.: 1:50

REFORÇO DAS PAREDES
ESC.: 1:50

Elemento	Pos.	BL.	Q.	Comp.	Total	Ca-50A
			(cm)	(cm)	(kg)	(kg)
CAIXA	1	#8	49	80	3920	15.39
	2	#8	49	110	5390	21.16
DE MANOBRA	3	#5	49	60	2940	11.54
	4	#8	49	84	4116	16.16
	5	#8	12	371	4452	17.47
	6	#8	12	419	5028	19.73
	7	#8	9	401	3609	14.17
	8	#8	9	449	4041	15.86
Total+10%:						144.62
ES:						144.62
TOTAL:						144.62

NOTAS:

1 - COTAS EM cm, ELEVAÇÕES EM m, SALVO INDICAÇÃO CONTRÁRIA.

CONTRATANTE	FUNASA - Fundação Nacional de Saúde
PROGRAMA	Programa de Aceleração do Crescimento - PAC 2
MUNICÍPIO/BAHIA	CORAJÃO DE JESUS - MG
TÍTULO	SISTEMA DE ABASTECIMENTO DE ÁGUA PROJETO ESTRUTURAL BASES E CAIXA DE MANOBRA - FORMA E ARMAÇÃO
DATA	OUTUBRO/2013
ABORDA	DE-2012.007-MG-COUSA-EST-1001-90
INDICADA	FRANCA
FRANCA	01

CONTRATANTE	FUNASA - Fundação Nacional de Saúde
PROGRAMA	Programa de Aceleração do Crescimento - PAC 2
MUNICÍPIO/BAHIA	CORAJÃO DE JESUS - MG
TÍTULO	SISTEMA DE ABASTECIMENTO DE ÁGUA PROJETO ESTRUTURAL BASES E CAIXA DE MANOBRA - FORMA E ARMAÇÃO
DATA	OUTUBRO/2013
ABORDA	DE-2012.007-MG-COUSA-EST-1001-90
INDICADA	FRANCA
FRANCA	01